

CYprus Blaise Intergrated Census System (CY-BICS)

**International Blaise User Conference
London, 24 April 2012**

**Costas K. Diamantides, Statistical Service of Cyprus
Lon Hofman, Statistics Netherlands**

Outline

- Census Objectives
- Background
- Organisational Structure
- CY-BICS
- Conclusions

Census Objectives

PRIMARY OBJECTIVES

- Collect data of high quality
- Timely publication of results
- Minimize the cost
- Full and accurate coverage

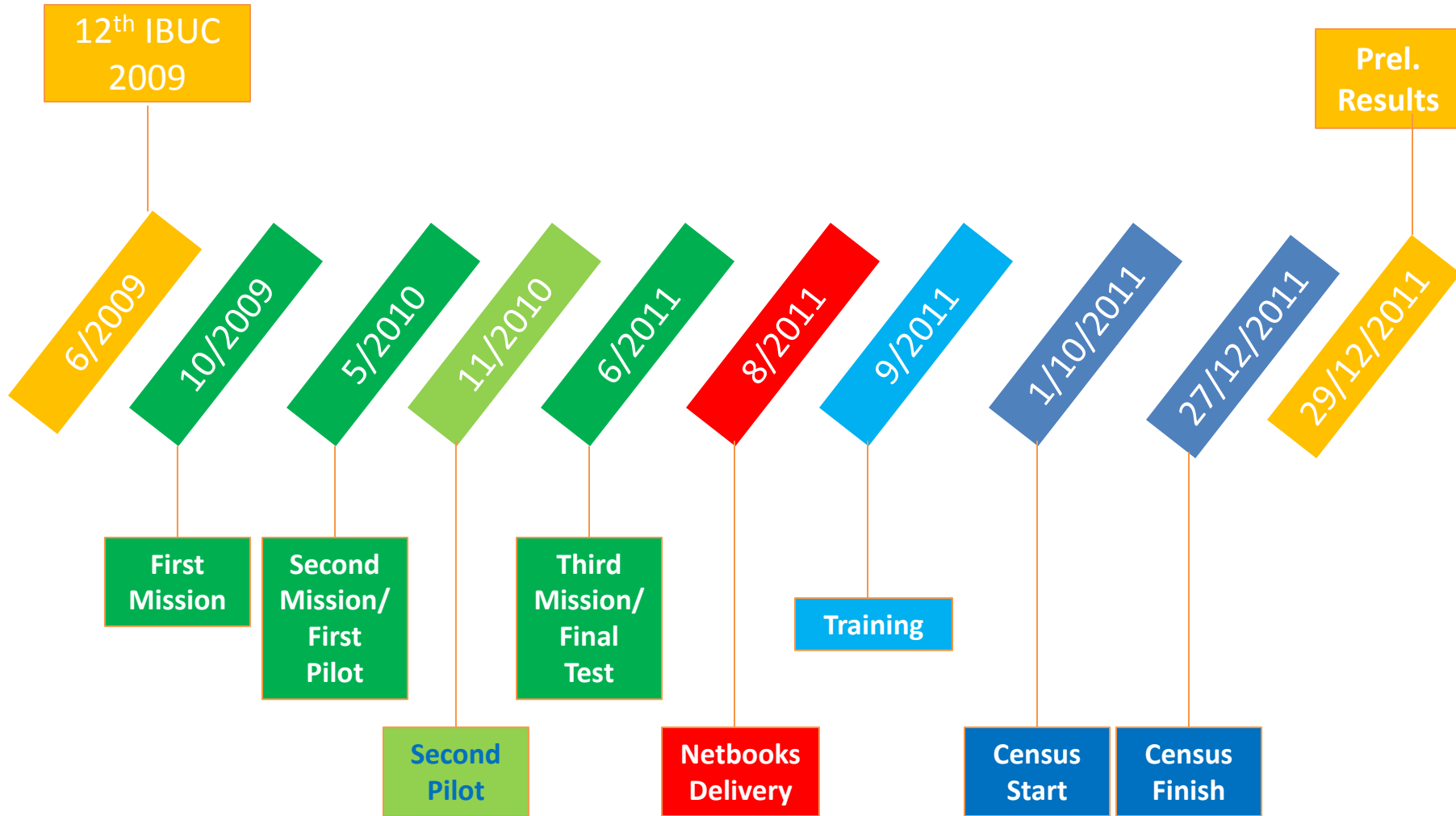
SECONDARY OBJECTIVES

- Monitor the performance of employees
- Future use

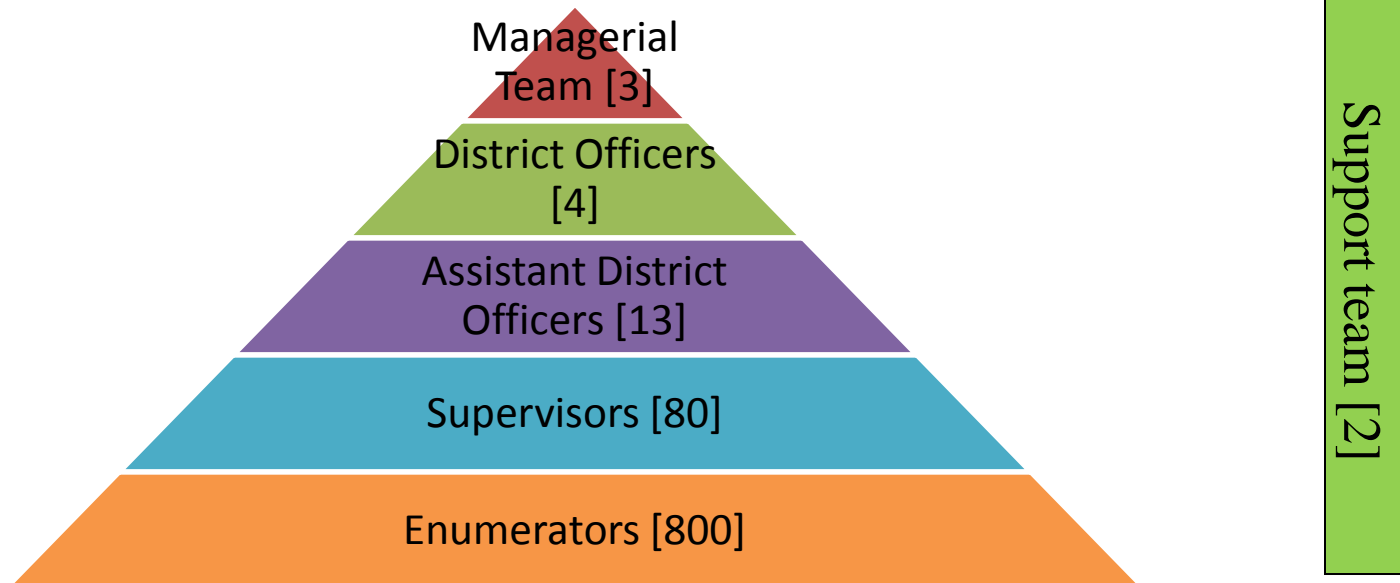
Implementation Options

- Manual entry from paper X
- Optical data entry X
- Computer Assisted Personal Interviewing ✓

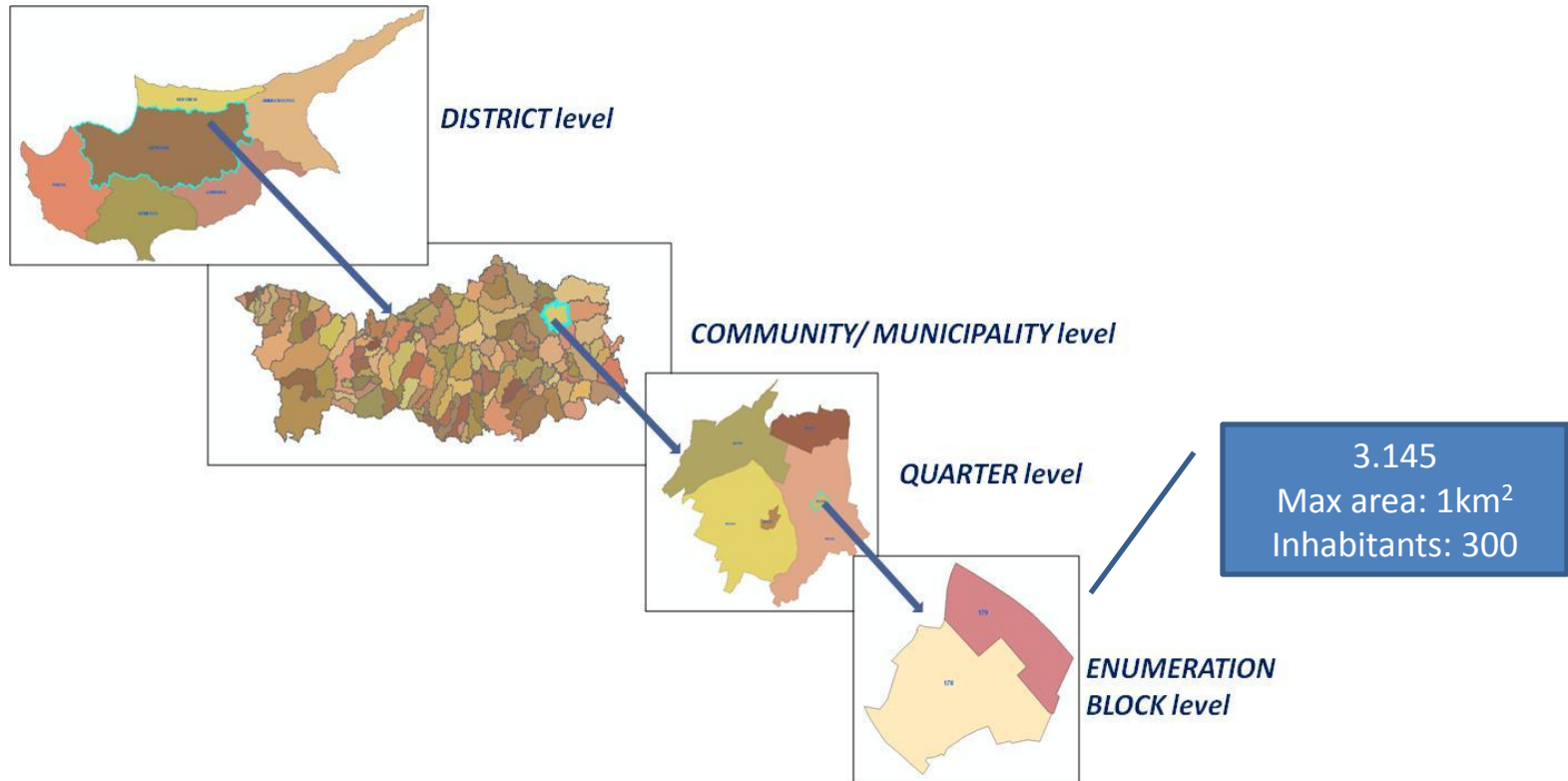
Milestones



Organisational structure



Working Unit – Enumeration Block



CY-BICS Components

- ❖ Electronic Questionnaire
- ❖ Supervisors' Application
- ❖ District Officers' Application
- ❖ Central Application

Contents of Electronic Questionnaire

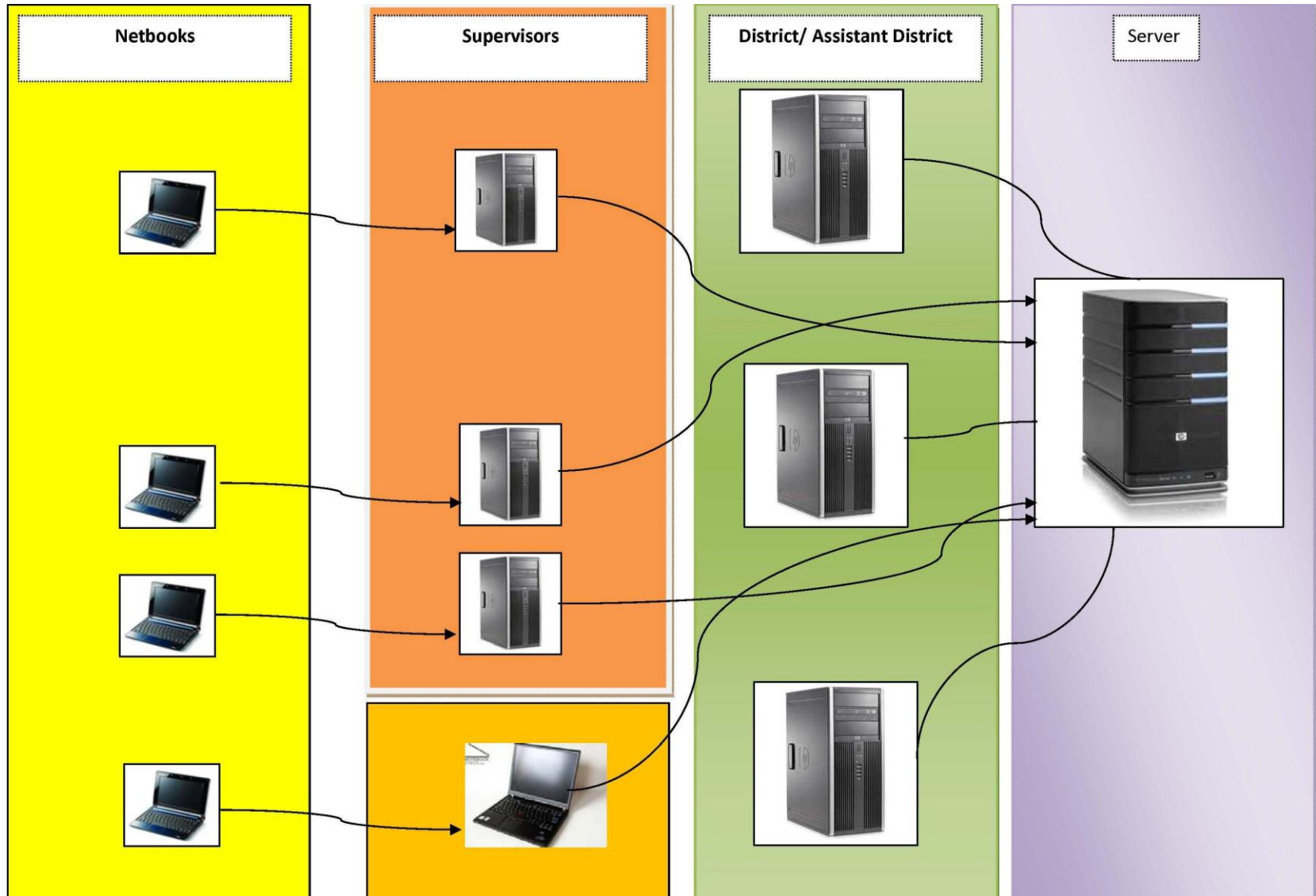
Street information	Dwelling questionnaire				
	PART A	PART B	PART C	PART D	PART E

❖ Street information

❖ Dwelling questionnaire

- PART A: Housing Unit questionnaire
(built year, no of rooms, facilities etc)
- PART B: Household questionnaire
(rent, internet etc)
- PART C: Household Roster
(household composition)
- PART D: Personal questionnaire
(age, marital status, place of birth, employment etc)
- PART E: Completion Status
(completion verification, contact details etc)

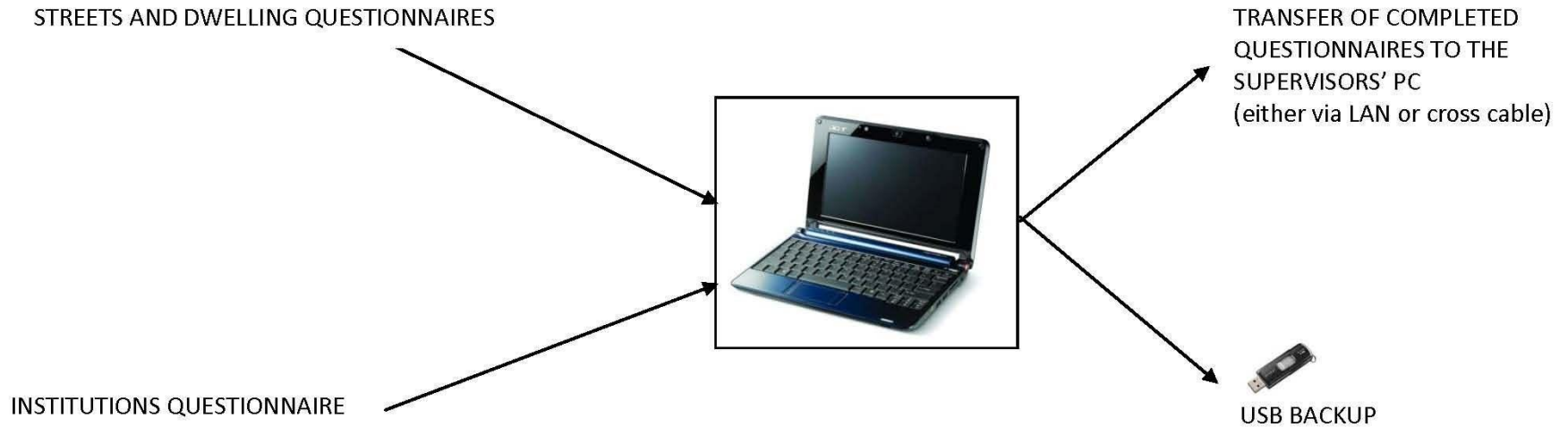
Dataflow (1/2)



Dataflow (2/2)

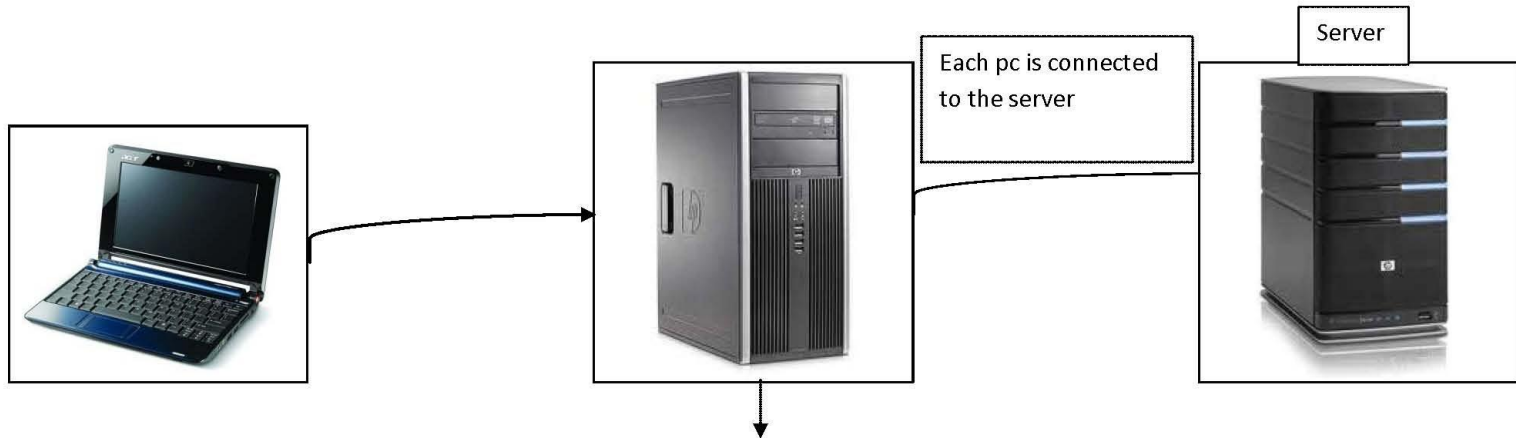


PROCEDURES ON NETBOOKS (ENUMERATORS)



PROCEDURES ON SUPERVISORS PCs

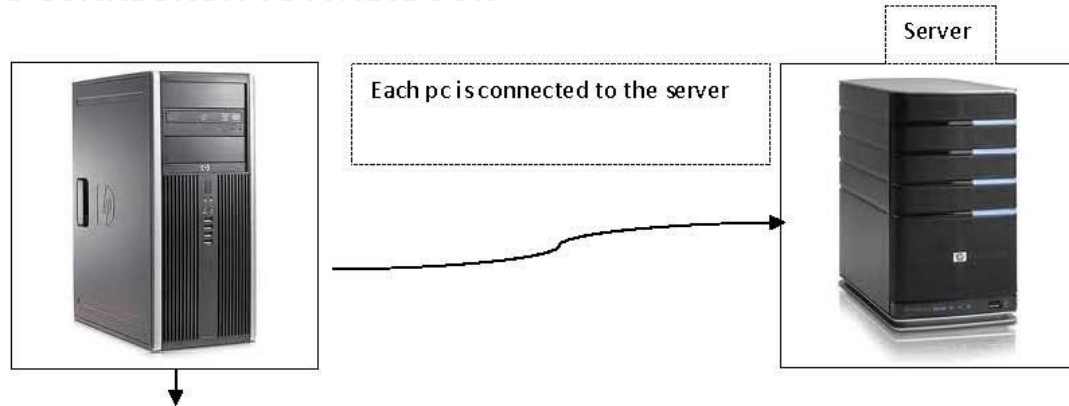
CASE 1: THERE IS CONNECTION TO A NETBOOK



- Edit **only** those questionnaires not transferred to the supervisors' pc
- **Produce reports** for all completed and not completed questionnaires
- **Transfer** the completed questionnaires from netbook to the supervisors' pc

PROCEDURES ON SUPERVISORS PCs

CASE 2: THERE IS NO CONNECTION TO A NETBOOK



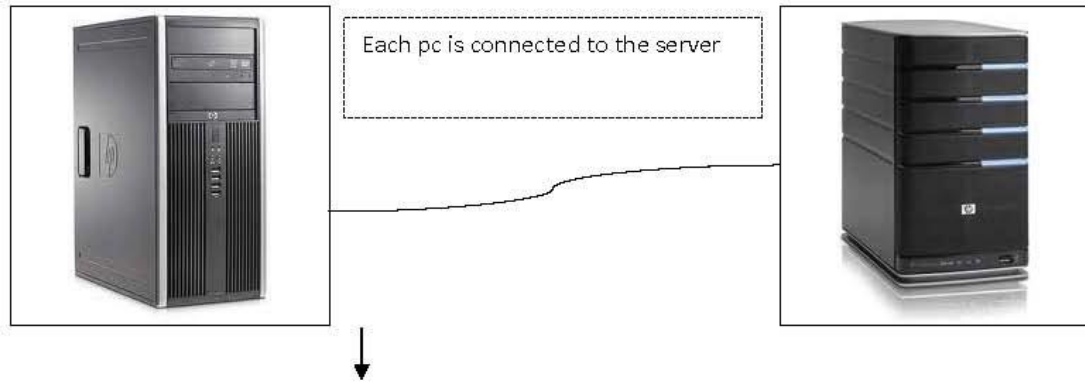
DATABASE WITH COMPLETED QUESTIONNAIRES

COPY OF THE DATABASE ON NETBOOK (VIEWING ONLY)

ONLY THE DISTRICT OFFICER

- Transfer a completed enumeration block to server

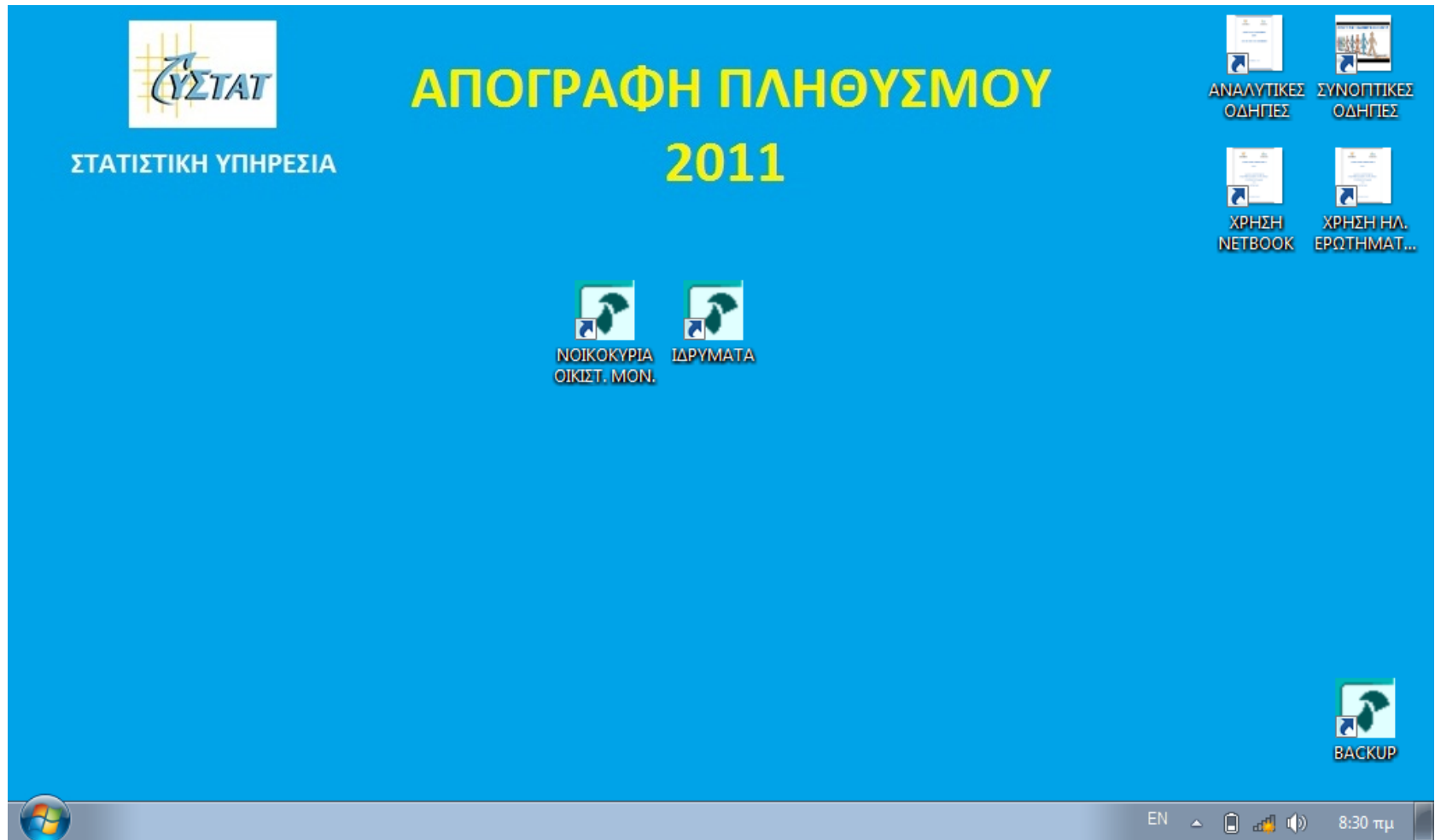
PROCEDURES ON DISTRICT AND ASSISTAND DISTRICT OFFICERS PCs



DATABASE WITH COMPLETED ENUMERATION BLOCKS

COPY OF THE DATABASES WITH COMPLETED QUESTIONNAIRES (FROM SUPERVISORS PCs)

Netbook start-up page



Electronic questionnaire (1/5)

Streets in enumeration block 101204701

Municipality: Στρόβολος Supervisor
1.3.7.0
 Quarter: Απόστολος Βαρνάβας και Άγιος Μακάριος

Street code	Street name	Dwellings?	#Dwellings	#Completed	#Started	Status	Original name	Remark
▶ 1012030006	Αθαλάσσης Λεωφόρος		22	22				
1012030089	Γρηγορίου Λουβιά		22	22				
1012030090	Γυθείου	No						
1012030093	Δασσυπόλεως		33	33				
1012030141	Καλλιόπης		2	2				
1012030235	Πεντέλης		31	31				
1012030239	Πέτρου Ηλιάδη		19	19				
1012030315	Φώτη Πίπτα		12	12				
1012030318	Χαράλαμπου Καλαϊτζή		5	5				
1012030320	Χριστοδούλου Εγγλέζου		16	16				
1012030321	Χριστοδούλου Καννάουρου		10	10				
1012030495	X-0495	No						
1012030678	X-0678	No						

1:13

Select Add Street Correction Ready >> EL

Electronic questionnaire (2/5)

Housing units

Street: **Αθαλάσσης Λεωφόρος**
 Street code: 1012030006

HousingID	Status	Occ status	House number	Flat number	Household count	Remark
0001	COMPLETED	Inhabited	133		2	ΠΑΝΩ ΔΕΞΙΑ
0002	COMPLETED	Inhabited	135		1	
0003	COMPLETED	Inhabited	133		1	ΑΡΙΣΤΕΡΑ ΤΟ ΔΕΥΤΕΡΟ
0004	COMPLETED	Inhabited	133		1	ΑΡΙΣΤΕΡΑ ΤΟ ΙΣΟΓΕΙΟ
0005	COMPLETED	Inhabited	129	103	1	
0006	COMPLETED	Reserved	129	101		ΚΕΝΗ
0007	COMPLETED	Inhabited	123		1	
0008	COMPLETED	Vacant	133			ΚΕΝΗ ΔΕΞΙΑ ΙΣΟΓΕΙΟ
0009	COMPLETED	Inhabited	119	1	1	
0010	COMPLETED	Inhabited	119	3	1	
0011	COMPLETED	Inhabited	129	102	1	
0012	COMPLETED	Inhabited	117	11	1	ΠΡΩΤΟΣ ΟΡΟΦΟΣ
0013	COMPLETED	Inhabited	117	41	1	ΤΕΤΑΡΤΟΣ ΟΡΟΦΟΣ
0014	COMPLETED	Vacant	111	111		ΚΕΝΗ
0015	COMPLETED	Inhabited	109	1	1	ΚΑΤΩ ΑΠΟ ΤΟ ΣΠΙΤΙ ΕΧΕΙ ΚΑΤΑΣΤΗΜΑΤΑ
0016	COMPLETED	Inhabited	111	301	1	

1:22

Select Add Move Correction Delete Ready >>

Electronic questionnaire (3/5)

Select household in housing unit

Housenumber: 2
Flatnumber:
Remark:

Street code	HousingID	Serialnumber	#Persons	Head	Status	HH-DK/RM
▶ 1000010010	0001	01	3	MARIOS	COMPLETED	
1000010010	0001	02	1	1	COMPLETED	

1:2

Select Ready

Electronic questionnaire (4/5)

Questionnaire B,C,D for Population Census 2011

Forms Answer Navigate Options Help

Household MARIOS XRISTINA KATERINA Housing Unit Questionnaire Status

PART A. QUESTIONNAIRE FOR THE HOUSING UNIT

1. Type of living quarters

1. Conventional dwelling (permanent building designed for habitation) 3. Other housing units not designed for habitation (e.g. garages, barns, warehouses, shops)

2. Improvised housing unit (e.g. barracks, huts, tents) 4. Collective living quarters other than housing units (e.g. hotels, institutions etc.)

A1	1	Conventional dwelling (permanent building designed for habitation)
A2	1	Single house
A2_2		
A3	9	2006
A4	1	Occupied and used as usual residence by one or more residents
A4_2		
A5a	5	
A5b	200	
A6	1	Separate room

Electronic questionnaire (5/5)

Questionnaire B,C,D for Population Census 2011

Forms Answer Navigate Options Help

Household MARIOS XRISTINA KATERINA Housing Unit Questionnaire Status

Please state the names of the persons who usually live in this household. First the name of the head of the household.

	Name	Surname	Sex	Birth date	Age		
Name[1]	MARIOS	CHRISTOU	1	1/5/1956	55		
Name[2]	XRISTINA	CHRISTOU	2	1/6/1957	54		
Name[3]	KATERINA	CHRISTOU	2	1/6/1990	21		

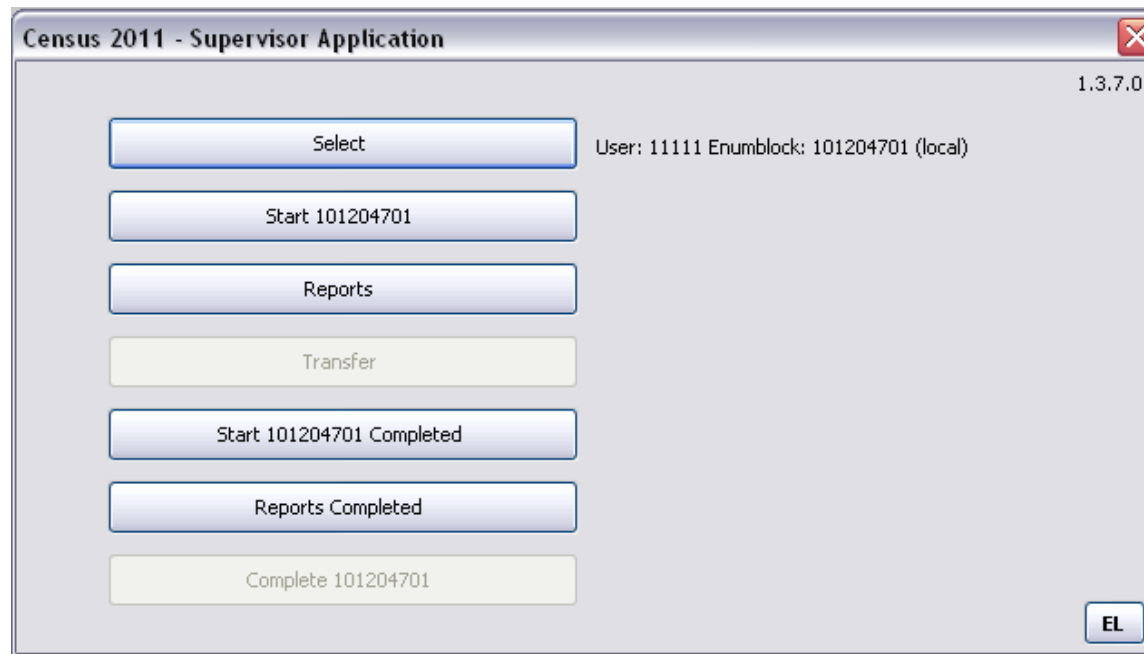
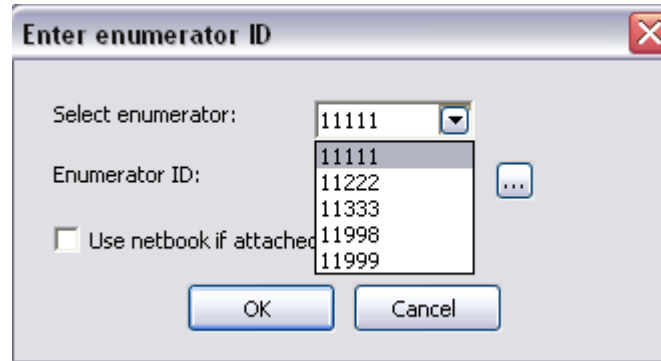
Supervisor application (1/3)

Connected to netbook



Supervisor application (2/3)

Locally

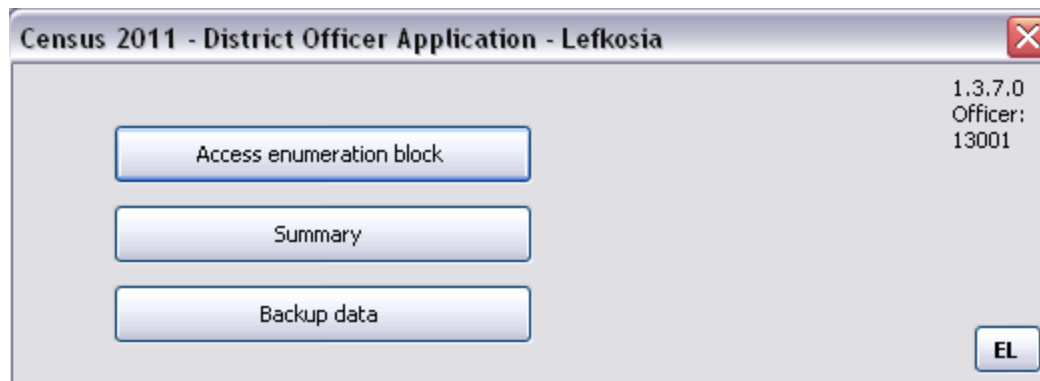


Supervisor application (3/3)

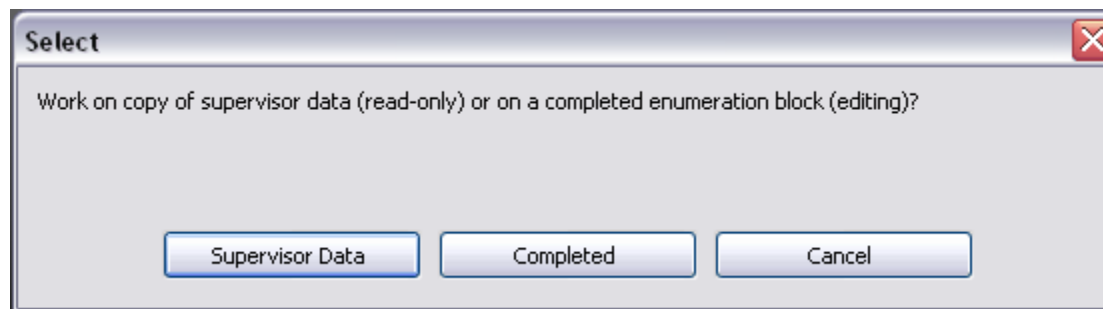
Login as District Officer

The image shows two overlapping windows from the Supervisor application. The top window, titled "Κωδικός Απογραφέα", is a dialog box for selecting a district officer. It contains a label "Επιλέξτε Απογραφέα:" followed by a dropdown menu showing "11111". Below the dropdown are two buttons: "Εντάξει" (OK) and "Ακύρωση" (Cancel). The bottom window, titled "Απογραφή 2011 - Εφαρμογή Λογισμικού Περιφερειακού Επιθεωρητή", is the main application window. It displays the user's role as "Officer 1.3.7.0" and their assigned district as "Χρήστης: 11111 Απογραφικό Τμήμα: 101204701 (τοπικά)". The main area contains several buttons: "Επιλογή", "Εκκίνηση 101204701", "Πίνακες", "Μεταφορά", "Εκκίνηση 101204701 Συμπληρωμένα", "Πίνακες Συμπληρωμένα", and "Τελική Μεταφορά Απογρ. Τμήματος 101204701". A language selection button "EN" is located in the bottom right corner.

District Officer application (1/4)



Initial window for “Access enumeration Block” and “Summary”



District Officer application (2/4)

Access enumeration Block – Supervisor Data

Select Enumeration Block: Supervisor Data

Enum block	Supervisor	Enumerator	Date	Time	Completed EB
▶ 100000100	12019	11312	2011-12-21	21:34:28	
100000200	12019	11122	2011-12-21	20:52:41	
100000300	12019	11123	2011-12-21	09:05:13	
100000400	12019	11312	2011-12-21	09:49:22	
100000500	12019	11122	2011-12-21	20:52:50	
100000601	12019	11127	2011-12-21	09:45:23	
100000602	12019	11127	2011-12-21	09:47:00	
100000701	12019	11121	2011-12-21	08:26:17	
100000702	12019	11121	2011-12-21	08:31:03	
100000703	12019	11121	2011-12-21	20:49:12	
100000801	12019	11122	2011-12-21	20:52:59	
100000802	12019	11122	2011-12-21	20:53:08	
100000900	12019	11127	2011-12-21	21:40:50	
100001001	12019	11123	2011-12-21	20:56:30	
100001002	12019	11123	2011-12-21	21:18:53	
100001101	12019	11125	2011-12-21	21:07:52	
100001102	12019	11125	2011-12-21	21:08:01	
100001200	12006	11039	2011-12-19	11:58:57	
100001300	12010	11078	2011-12-20	10:39:13	
100001400	12010	11074	2011-12-20	10:36:14	

Search: Key type:

1:1157

Select Refresh Ready

District Officer application (3/4)

Summary – Supervisor Data

Summary: Supervisor Data

District totals

No. of households	117202	Total number of enumeration blocks	1157
No of Occupied HU	115294	Total number of completed enumeration blocks	0
No of Not Occupied HU	26115		
Nr of HH members	319699		
%Edit	48,1%		

Enum block	Supervisor	Enumerator	No. of households	No of Occupied HU	No of Not Occupied HU	Nr of HH members	%Edit	Completed EB
102103403	12014	11001	141	141		24	506 96,5%	
102103600	12014	11002	57	57		2	209 89,5%	
102103701	12014	11002	43	42		15	136 90,7%	
102103702	12014	11002	92	92		10	292 81,5%	
102103901	12014	11002	96	96		8	334 88,5%	
102103503	12014	11003	205	205		35	714 98,5%	
102200201	12014	11003	91	91		12	228 94,5%	
102200202	12014	11003	83	83		18	172 100,0%	
102200101	12014	11004	102	102		29	234 98,0%	
102200102	12014	11004	63	63		19	169 84,1%	
102200103	12014	11004	44	44		4	102 88,6%	
102103003	12014	11005	141	139		7	474 62,4%	
102103801	12014	11006	141	141		15	427 99,3%	
102103902	12014	11006	113	113		9	360 92,9%	
102103903	12014	11006	76	76		4	259 100,0%	
102103904	12014	11006	130	130		12	416 97,7%	
102200300	12014	11007	136	136		31	312 72,1%	
102200401	12014	11007	95	95		15	206 97,9%	
102200402	12014	11007	98	98		10	207 98,0%	
102104002	12014	11008	166	166		26	580 76,5%	
102104004	12014	11008	116	116		6	413 81,1%	

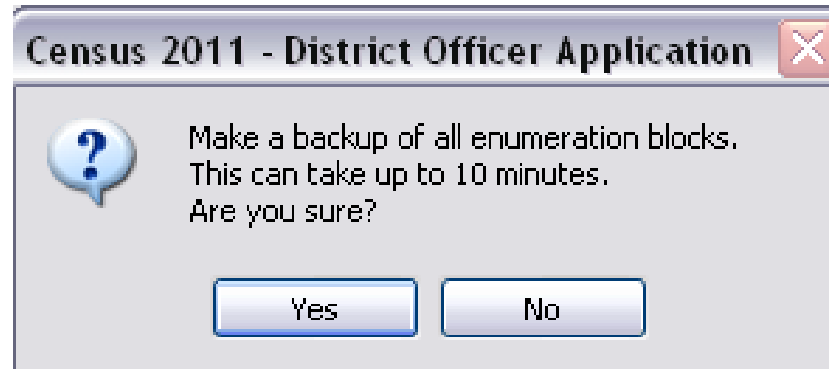
Search:

Key type: Enumerator

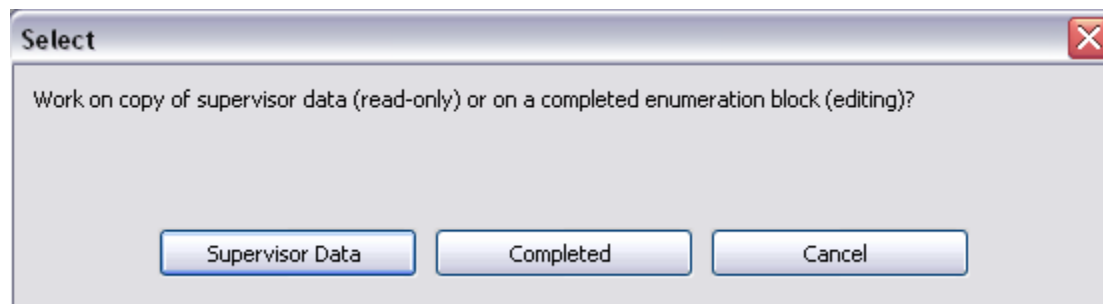
1:1157

Overall Report Supervisor Report Ready

District Officer application (4/4)



Central application (1/3)



Central application (2/3)

Summary Pafos –supervisor Data

Summary Pafos: Supervisor Data

District totals

No. of households	33473	Total number of enumeration blocks	458
No of Occupied HU	33158	Total number of completed enumeration blocks	458
No of Not Occupied HU	34000		
Nr of HH members	89320		
%Edit	68,4%		

Enum block	Supervisor	Enumerator	No. of households	No of Occupied HU	No of Not Occupied HU	Nr of HH members	%Edit	Completed EB
600002203	62001	61001	257	247	446	644	44,4%	yes
600003501	62001	61001	106	101	29	324	100,0%	yes
600003502	62001	61001	80	78	36	207	100,0%	yes
600003503	62001	61001	107	100	29	312	100,0%	yes
600002502	62001	61002	47	47	66	126	100,0%	yes
600003404	62001	61002	81	81	25	244	100,0%	yes
600003405	62001	61002	64	64	29	187	100,0%	yes
600003504	62001	61002	123	123	37	368	100,0%	yes
600001500	62001	61003	5	5	2	15	100,0%	yes
600003401	62001	61003	79	79	11	264	100,0%	yes
600003402	62001	61003	160	159	36	504	100,0%	yes
600003403	62001	61003	128	128	18	427	100,0%	yes
600002300	62001	61004	97	97	145	201	100,0%	yes
600002801	62001	61004	126	126	42	357	100,0%	yes
600002802	62001	61004	87	87	28	267	100,0%	yes
600002803	62001	61004	100	100	64	272	100,0%	yes
600002103	62001	61005	203	194	46	625	100,0%	yes
600002901	62001	61005	78	77	26	207	100,0%	yes
600002902	62001	61005	111	109	20	289	100,0%	yes
600003001	62001	61005	88	88	45	238	100,0%	yes

Search:

Key type: Enumerator

1:458

Central application (3/3)

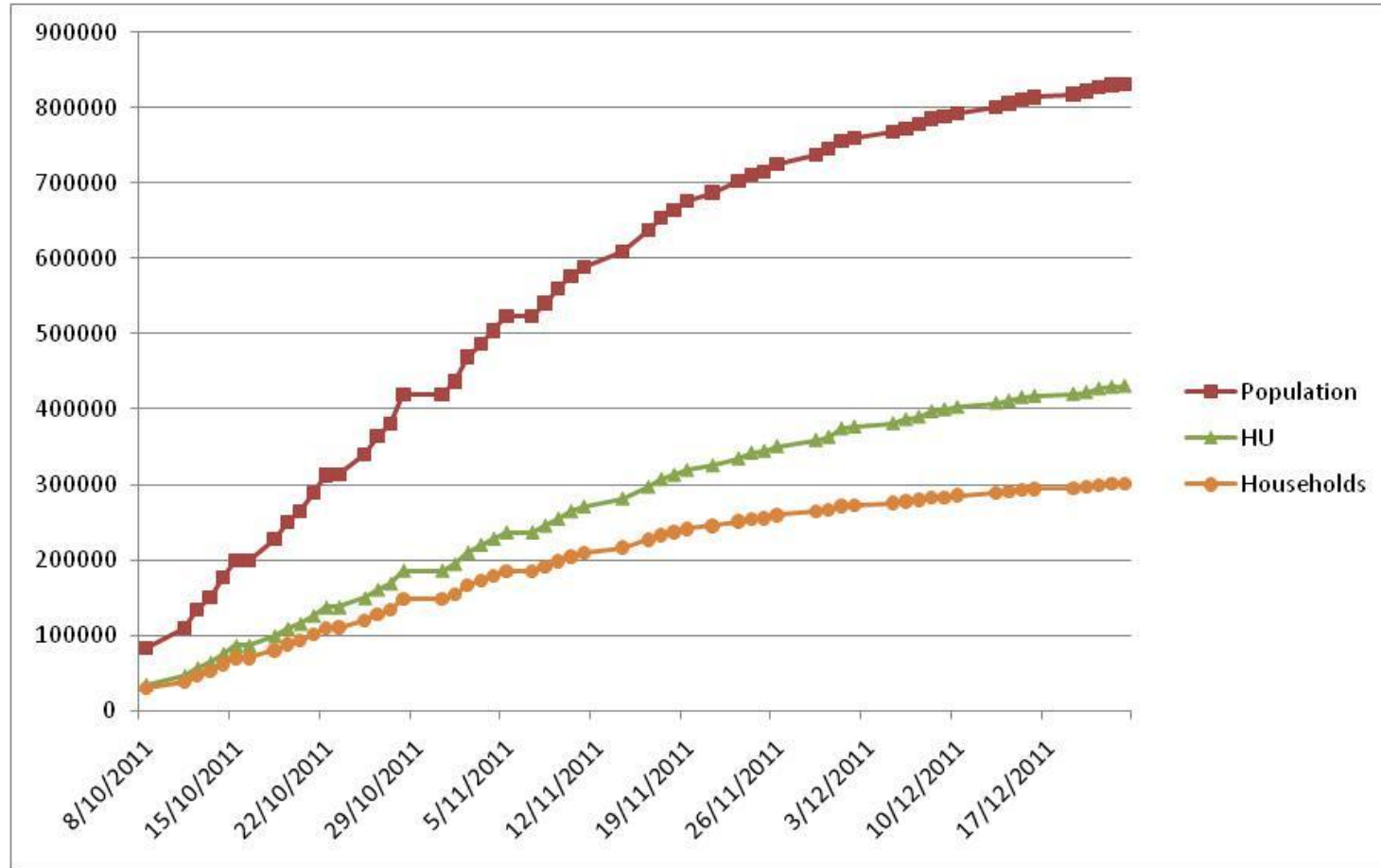
Cyprus Summary

Summary Cyprus: Completed Enum Block

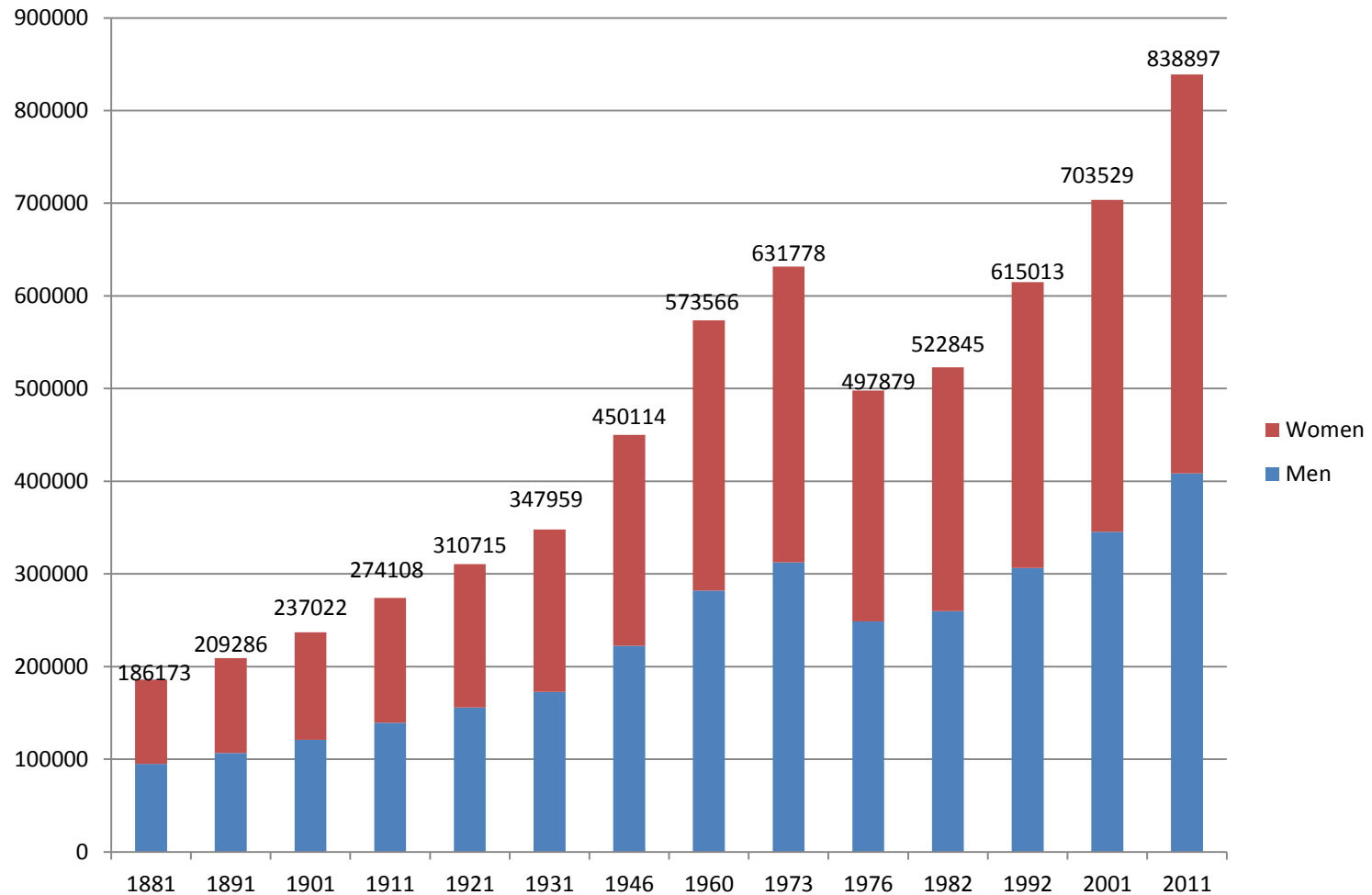
Cyprus totals			
No. of households	<input type="text" value="303258"/>	Total number of enumeration blocks	<input type="text" value="3156"/>
No of Occupied HU	<input type="text" value="299294"/>	Total number of completed enumeration blocks	<input type="text" value="3156"/>
No of Not Occupied HU	<input type="text" value="134269"/>		
Nr of HH members	<input type="text" value="836671"/>		
%Edit	<input type="text" value="48,6%"/>		

Ready

Monitoring



Population in Cyprus by sex, census years



Conclusions

- ✓ Significant cost savings
- ✓ Data quality and improved coverage
- ✓ Timely dissemination
- ✓ Development and implementation of similar systems in CYPSTAT
- ✓ Environmental protection
- ✓ Immediate availability of sampling frame for household surveys
- ✓ BLAISE can do everything!!!