

Converting a CATI Instrument from Blaise 4 to Blaise 5 for Pilot Testing

Emily Caron – NASS, Vito Wagner – NASS, and
Kathleen O'Reagan - Westat



Some Background

- NASS
 - Provides Agricultural Statistics for USA
 - Over 120 distinct surveys per year
 - Over 350 survey instances per year
 - Blaise for CATI and CADI modes
 - Use in-house systems for CAWI & CAPI
- Westat
 - North American Distributer
 - They have the expertise
 - Provided high level demo

Project Goal



- Show Blaise 5 capabilities to Senior Level Managers
- Convert a NASS project to Blaise 5
 - How much time?
 - How much effort?
 - Do we need to reprogram everything?

NASS

Mink Survey

- Blaise 4.8 – CATI and CADI
- Simple survey
- Only 30 data items
- NASS shell code – 30 complex moduels
- Edit data across years
- Preload database

Of the total in Items 2 and 3, how many are in each of the following color classes?

- a. **Black** - (Standard, Pure Dark)
- b. **Demi/Wild** - (Dark Brown, Ranch Wild, Demi-buff)
- c. **Pastel** - (Dawn, Orchid)
- d. **Sapphire**
- e. **Blue Iris** - (Aleutian, Gunmetal)
- f. **Mahogany**
- g. **Pearl**
- h. **Lavender** - (Lavender-Hope)
- i. **Violet** - (Cameo, Winterblue, Glacial)
- j. **White**
- k. **Palomino**
- l. **Other** (Specify: _____)

Pelts taken from 2015 crop for marketing	Females bred & to be bred to produce kits in 2016
(Number)	(Number)
101	201
102	202
103	203
104	204
105	205
106	206
107	207
108	208
109	209
110	210
112	212
111	211



Conversion

Pilot Test

- Utilize multimode capabilities of Blaise 5
- Retail shell code base
- Concentrate proof of concept on larger production activities
 - Ignored formatting

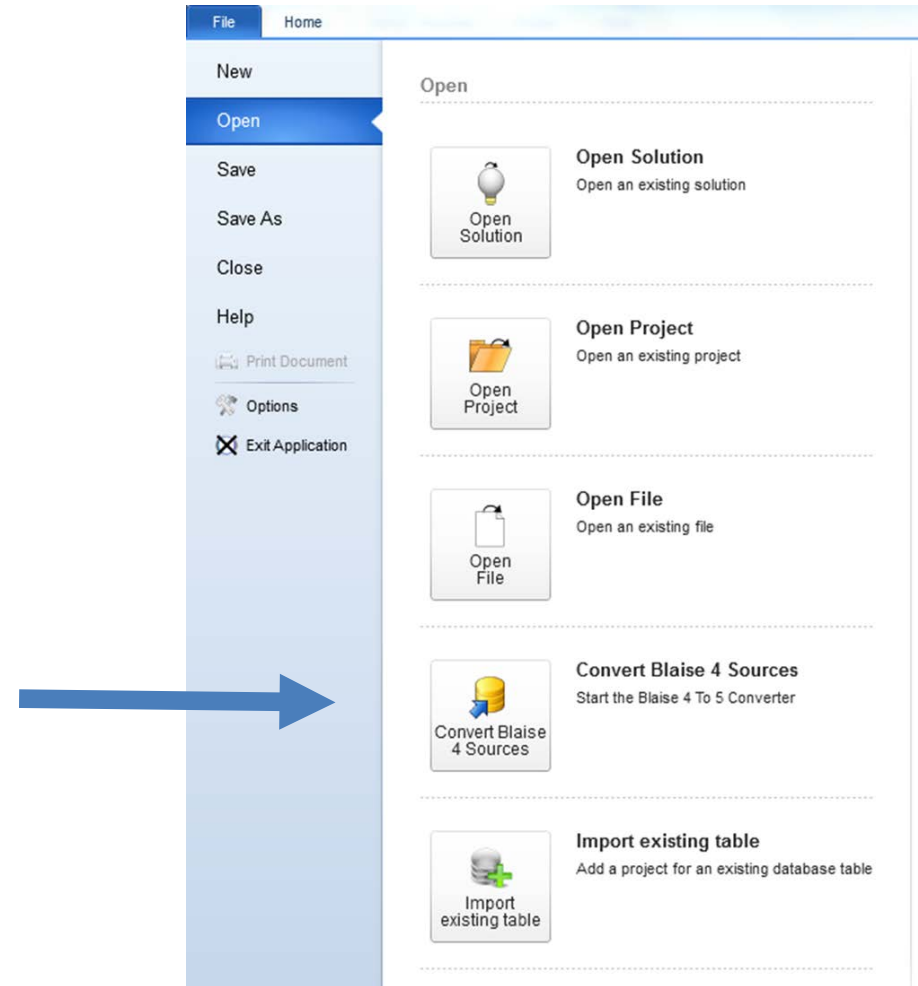
Conversion Tool

- Converts most of source code
- Database
 - Blaise 4 to 5
 - Blaise 5 to 4

Process – Source Code

Blaise4to5Source.exe

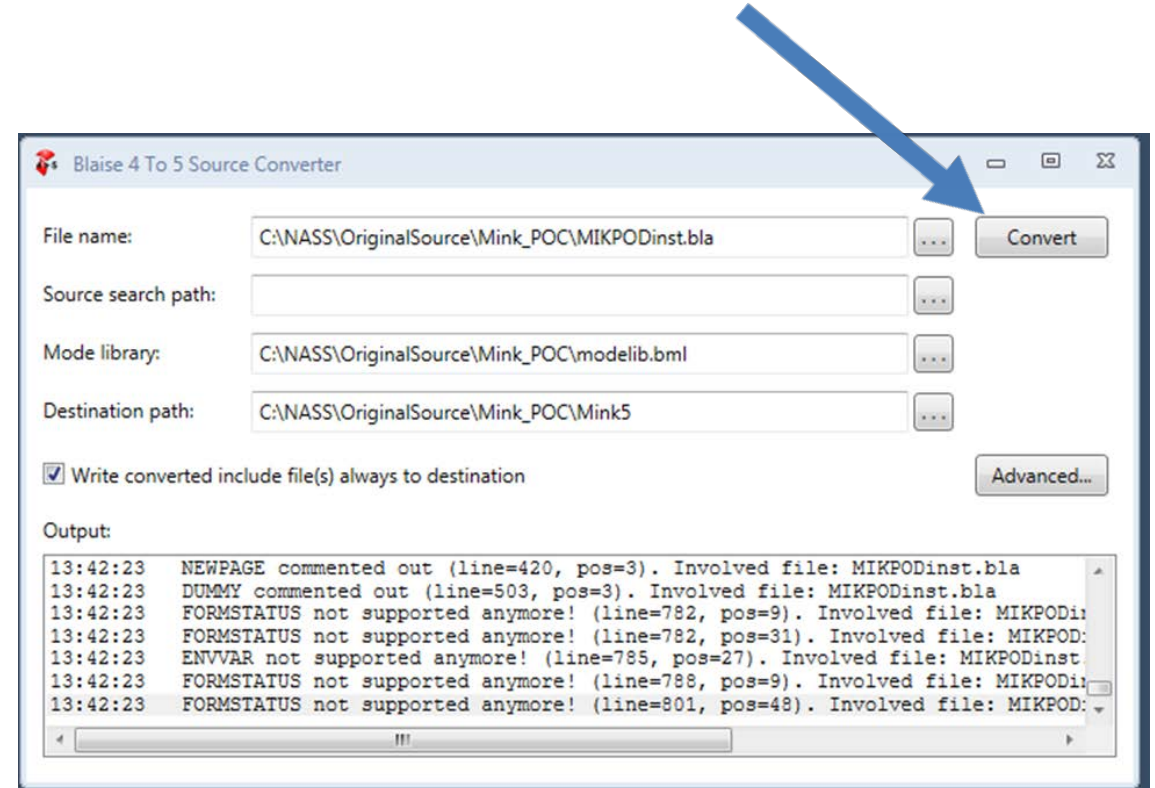
- Click button in Control Centre



Process – Source Code

Blaise4to5Source.exe

- Click button in Control Centre
- Fill in information
- Click Convert



Process – Source Code

Blaise4to5Source.exe

- Click button in Control Centre
- Fill in information
- Click Convert

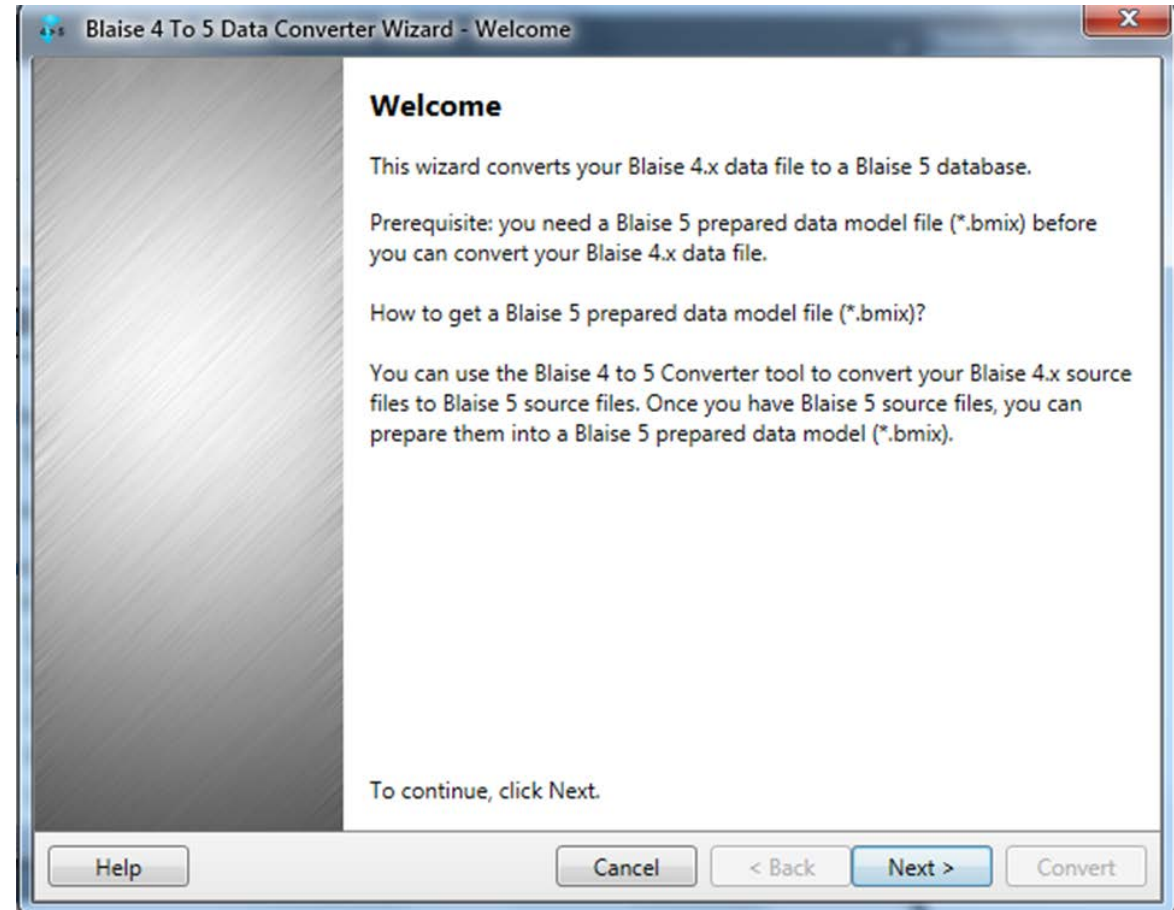
Minor Issues

- EnvVar
- Attributes
- Primary Key

Process – Database

Blaise4to5Data.exe

- Converts bdb or boi to bdix
- Configure bdix
 - Your choice of DB format



Process – Database

Blaise 4 To 5 Data Converter Wizard - Blaise 4 Database File

Blaise 4 Database File
Select the database file that you want to convert

Blaise 4.x Data File
C:\NASS\OriginalSource\Mink_POC\MIKPODinst.bdb

Compiled Data Model File
C:\NASS\OriginalSource\Mink_POC\MIKPODinst.bmi

Data model Search path

External Search path

To continue, click Next.

Help Cancel < Back Next > Convert

Blaise 4 To 5 Data Converter Wizard - Select Blaise 5 Files

Select Blaise 5 Files
Select data model file (*.bmix), data interface file (*.bdix) and possibly database file (*.bdbx) to store the data in

Blaise Data Model File (*.bmix)
C:\NASS\Blaise5\Mink_POC\MIKPODinst.bmix

Blaise Data Interface File (*.bdix)
C:\NASS\Blaise5\Mink_POC\MIKPODinst.bdix

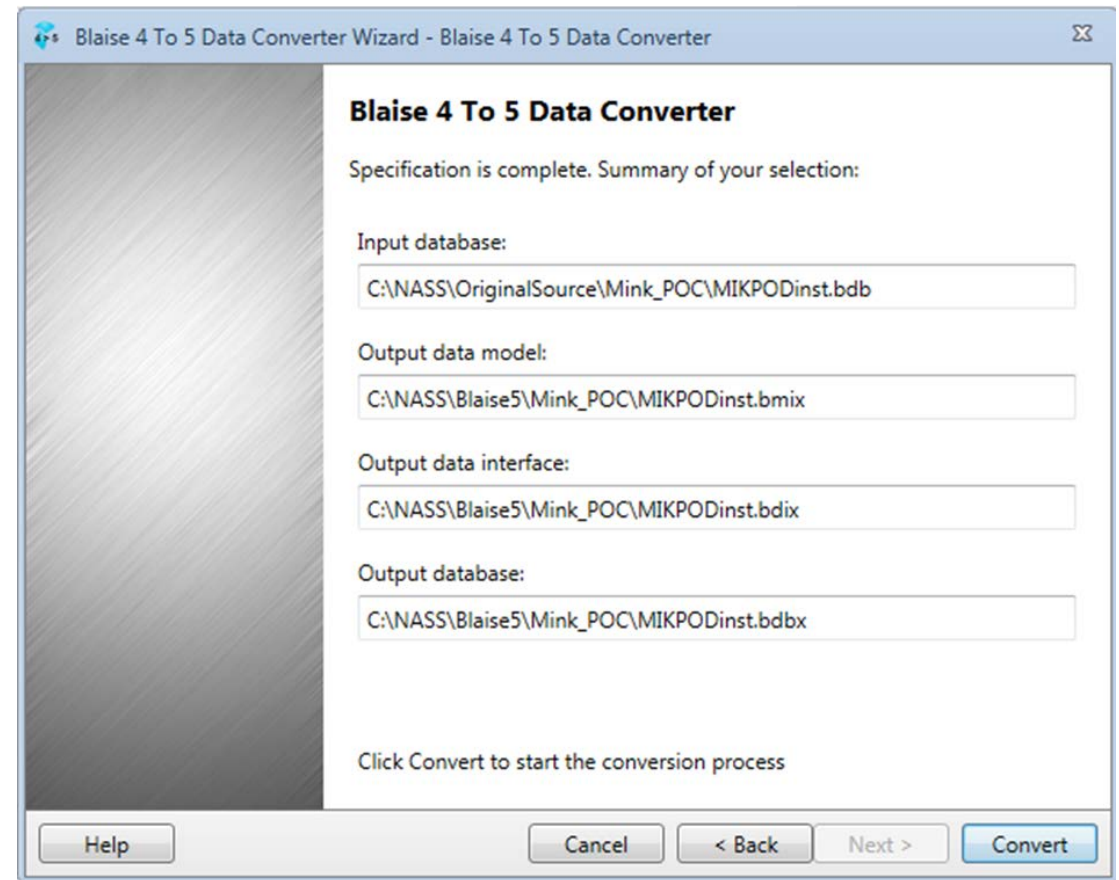
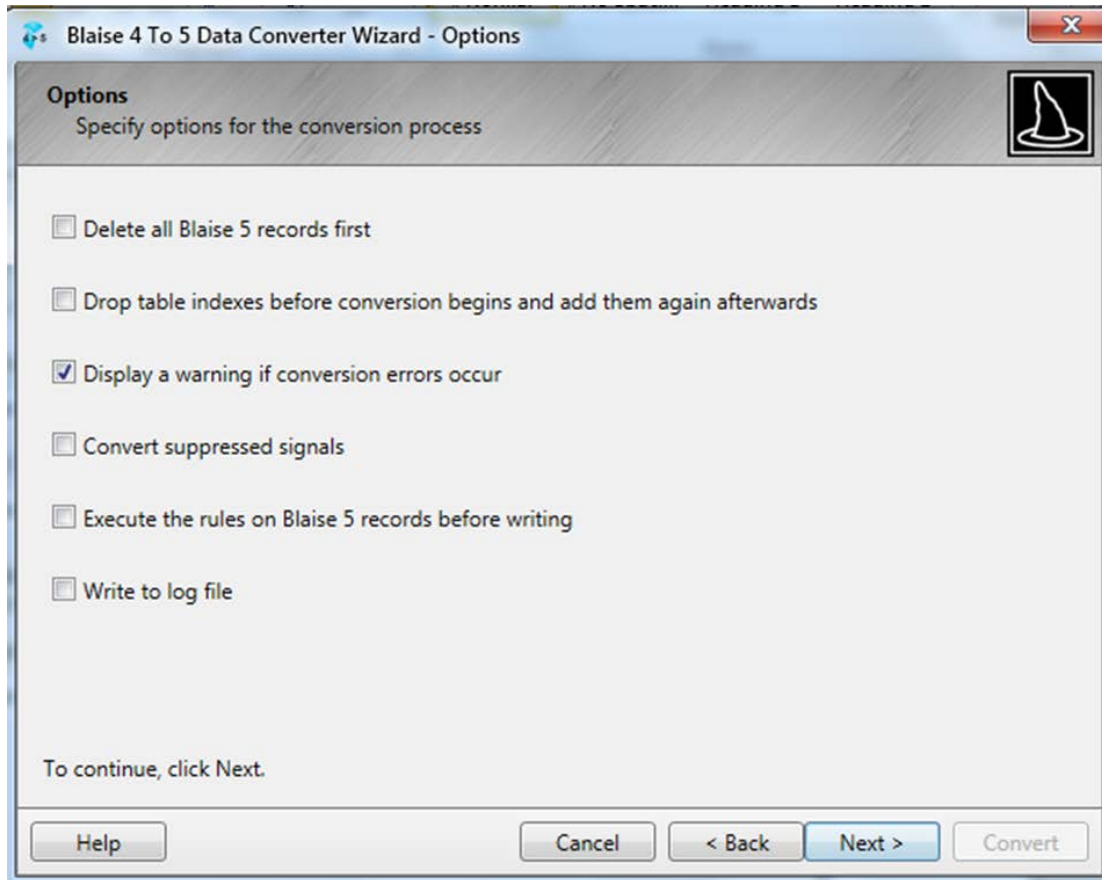
You also need a Blaise database file (*.bdbx). The data will be stored in this file. This database file will be referenced in the Blaise Data Interface file that you have specified above.

Database File Name (*.bdbx)
C:\NASS\Blaise5\Mink_POC\MIKPODinst.bdbx

Create

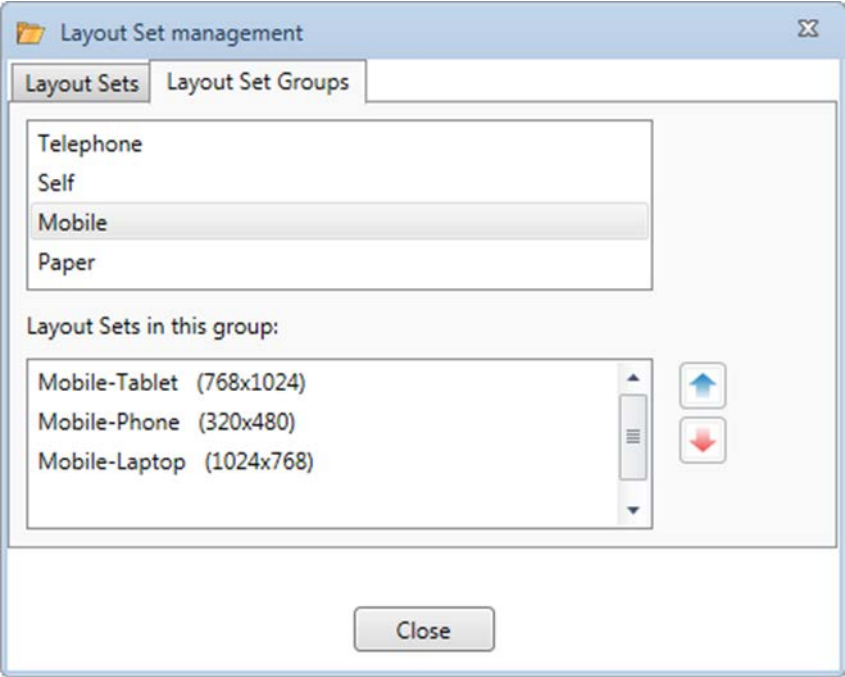
Help Cancel < Back Next > Convert

Process – Database

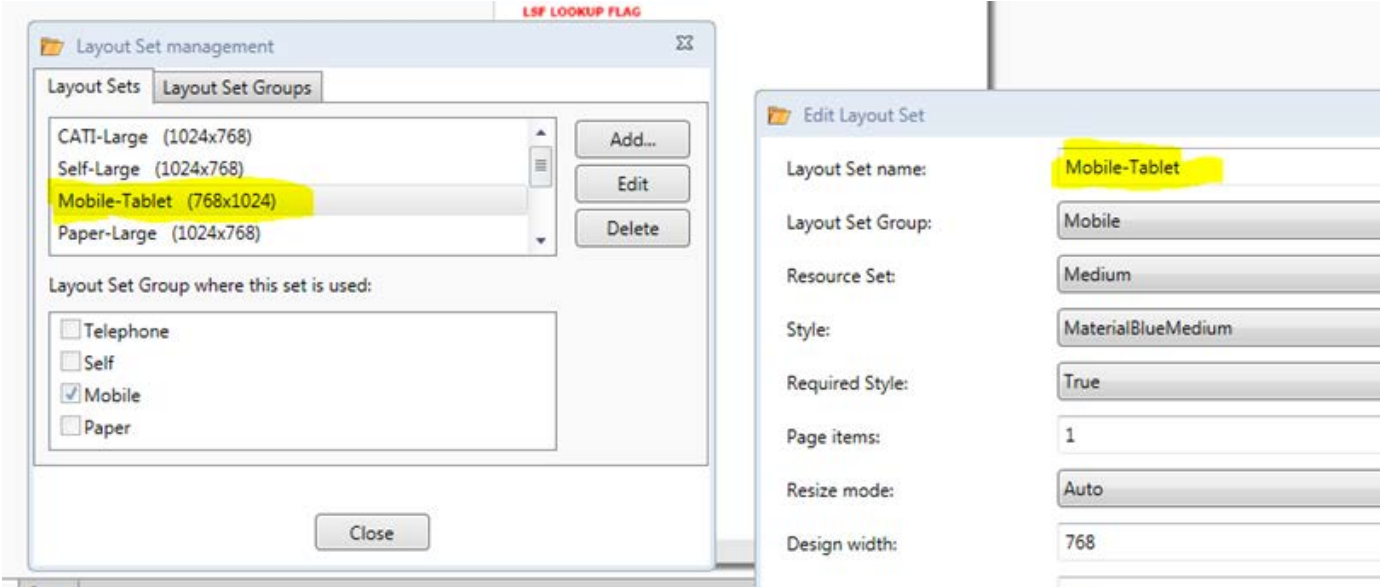


Multimode

Layout Set Groups



Reflects Resource Database



Resource Database Changes

CAWI

- Changed a TextSource to “Name”
 - Display field’s descriptive text instead of field name
- Deleted groupText cell
- Added fieldText cell
 - Added display for question text of columns
- AnswerListArea cell
 - Added Category button
 - Added Special Answer button
- SpecialAnswerArea cell
 - Added Special Answer button

Resource Database Changes

CATI

- Copied Default Table template
 - Named it MinkTable
- Added Field Question Text as 1st Row



Code Modifications for Layouts

Grouped

- Enumerated field & Other specify
- Address information
 - City
 - State
 - Zip code

Tables

- Already separate blocks
- No changes needed!

More Modifications

Layouts

- Fields made “critical” on tables
 - Resolve display fields when moving rows
- Different templates for
 - Other Specify
 - Address group
 - Tables
- Page breaks

Resource Database

- Changed font
- Field Text Property – TextSource to “Value”
- Applicably condition
 - `POSITION('Label', FieldDefinition.LocalName)>0`
- Moved LabelTextOnly above Vertical template
 - Auto-assign auxfields containing “label” to green
- Renamed table template Abreast as CityStateZip

End Product

OLD

The screenshot shows a web browser window with the title 'Mink'. The address bar contains 'localhost/MIKPOD160000'. The page has a menu with 'Appointment', 'NonResponse', 'ELMOCComments', and 'OutsideAppointment'. The main content area is yellow and contains the following text: 'Operation Name:', 'Person Name:', and '[ENUM] Who is responding?'. Below this is a radio button group with five options: '1. Operator or Manager' (selected), '2. Spouse', '3. Accountant or Bookkeeper', '4. Partner', and '9. Other'. At the bottom, there is a 'Monitoring' section with a dropdown menu set to '1' and a 'Proceed' button. Below that is a 'WhoIsRsp' section with a dropdown menu set to '1' and an 'Operator' button. The 'Respdnt' field contains the text 'IMA FARMER' and the 'Relationship' field is empty.

NEW

The screenshot shows a web browser window with the title 'Web Mink'. The address bar contains 'localhost/MIKPODInst/BiPagHan.aspx?id=b958a48d-5817-4a25-a7a3-eb42cad116c4&sp=LocalDevelopment&js=true&sh=705&sw=1366&LayoutSetGroup=Self&L'. The page has a green header with the text 'Web Mink'. The main content area is white and contains the following text: 'Please update any field that is incorrect.' followed by a green box with the text 'The street address/route number of this operation is: 1234 SOMEWHERE LANE'. Below this is a radio button group with two options: 'Rather not answer' and 'Don't know'. Below that is another radio button group with two options: 'Rather not answer' and 'Don't know'. Below that is a radio button group with two options: 'Rather not answer' and 'Don't know'. Below that is a radio button group with two options: 'Rather not answer' and 'Don't know'. Below that is a radio button group with two options: 'Rather not answer' and 'Don't know'. At the bottom, there are 'Back' and 'Next' buttons.



Results

- Successfully converted from Blaise 4 to Blaise 5
 - Blaise 5 allows CATI, CAWI, and CAPI modes
- Conversion Tools are easy to use